

kitchens

KITCHEN
STORI



WELCOME...

You are about to embark on one of life's most exciting and exhilarating journeys - the purchase of a new kitchen. Don't worry, we are here to help.

Before you lies a comprehensive guide to achieving your dream kitchen goals with advice on choosing everything from overall room decor to door styles, colours and accessories, depending on your own personal preferences. You will be amazed by the sheer number of options available to you.

Our ultimate aim is to find your perfect kitchen and we won't be happy until you are.

So, get ready to create your own Kitchen Stori!

General Information 04-09, 198-220

Some important factors to consider when choosing your kitchen:

Lifestyle	04
Quality	06
Design.....	08
Internals	198
Finish	202
Kitchen Ranges (at a glance).....	206
Handles	212
Kitchen Door Care & Maintenance	219

Timeless Elegance 10-57

A sophisticated and luxurious collection of timeless classics.

Belgravia	14
Aldana	28
Clonmel	32
Georgia.....	38
Jefferson.....	40
Kensington.....	42
Madison	48
Wakefield	52
Windsor Shaker	56

Dramatic Overtones 58-101

Strong colours and bold textures characterise this innovative collection.

Zola, Rezana & Ferro	62
Aldana	66
Zola & Ferro	74
Florence.....	78
Strada	82
Zola	88
Georgia.....	92
Clonmel	96
Jefferson.....	98
Madison	100

Sleek Serenity 102-125

A smooth and serene collection of ergonomically designed kitchens.

Zola & Tavola	106
Strada	114
Zola	120

Urban Utopia 126-157

Bring a cool city vibe to your home with this eclectic kitchen collection.

Strada & Tavola	130
Strada & Aldana	134
Rezana & Ferro.....	138
Tavola	142
Zola, Ferro & Rezana	146
Strada	150
Zola	154

Country Chic 158-197

Realise your country kitchen dream with this edgy rural collection.

Aldana	162
Clonmel.....	170
Georgia.....	174
Florence.....	178
Jefferson.....	182
Kensington.....	188
Madison	190
Wakefield	192
Windsor Classic	196
Windsor Shaker.....	197

This document is intended only as a guide and, as no picture can accurately convey colour representation it is suggested you examine our products personally before purchase. Only then can you appreciate the detail of each and every component, the finishes applied and the superior quality. If your chosen finish is not on display, we recommend that you order a sample.



Lifestyle

Never before has there been more opportunity to create the ultimate kitchen, based on your lifestyle. With a myriad of choice available including various door styles, colours, textures and accessories, you can devise a space that directly reflects your personality and the way you choose to live your life. Whether you possess a flair for the dramatic, prefer a serene oasis or want to steep yourself in traditional comfort, your own 'personal' kitchen can be realised.



Quality

Quality excellence should be an integral aspect of any furniture you choose to purchase and something you simply expect, regardless of budget. Whether it is the construction, finish or design detail of our products you can be sure that high quality is our top priority. With this in mind you are free to concentrate on the look and feel of your new kitchen, confident that the quality is ingrained.





Design

Not to be underestimated, the design of your new kitchen is one of the most important decisions you can make. An infusion of cabinet & appliance layout, accessory choice, colour combination and selection of finish/texture, the design choices you implement will affect how you enjoy your kitchen for many years to come. Luckily we offer plenty of alternatives! Be sure to discuss your design carefully with your kitchen designer and ask about every conceivable option available to you.



Timeless Elegance

Belonging to an era that time forgot, Timeless Elegance represents enduring sophistication and luxury with beautifully crafted kitchen furniture that will last and last. Interspersed with ornate detailing and grand features, this classic collection brings traditional elements to the fore resulting in a stylish yet comfortable kitchen space that feels like it has always been there.



SETTING THE SCENE

Add authenticity to your timeless environment with the use of subtle textures and finishes that bring out the elegant nature of your kitchen furniture. Natural materials such as linen or cotton for upholstery, marble for worktops and timber for components such as internal shelving, inset trays and chopping boards will create a feeling of abiding comfort. Don't be afraid to inject some contemporary flavour into your design by including elements such as chrome handles and modern style lighting, as this will only enhance the look and feel!



BELGRAVIA

The epitome of true elegance, Belgravia brings both style and substance to your home with its ornately detailed inframe design and numerous accessories. Featuring a superb quality painted finish with visible woodgrain you can combine any number of colours to achieve the look you desire.

- 1 Detail showing four door larder and radiused mantle shelf.
- 2 Belgravia kitchen painted Midnight and Porcelain. Worktop is Vienna Quartz. Also features barrel unit with solid oak inset trays and circular worktop.

Handles: K1-191 and K1-217 (see pages 214 & 215).



1



2



3



4

3 Dresser unit showing curved and straight cornice features and plain frames.

4 Dresser internal featuring glass holder and bottle rack.

5 Detail showing cornice and undercornice.

6 Solid oak conical pedestal with solid oak top.



5



6

7 Coffee pod holder.

8 Four door larder displaying internal coffee station with open shelving and storage drawer.





9



10

- 9 Kitchen larder internal featuring solid oak wine glass holder, scalloped sided drawers and wine rack.
- 10 Belgravia kitchen painted Lavendar Grey and Cashmere. Worktop is grey slate effect. Also features skirting plinth.
- 11 Solid oak spice drawer fronts within central island.
- 12 Pastry bench with slatted oak base and solid oak worktop.
- 13 Large sideboard featuring T&G panelling, plain frames and x-box wine rack.
- 14 Base units housing integrated solid oak trays and chopping boards.

Handles: K1-197 and K1-200 (see pages 212 & 213).



11



12



14



13

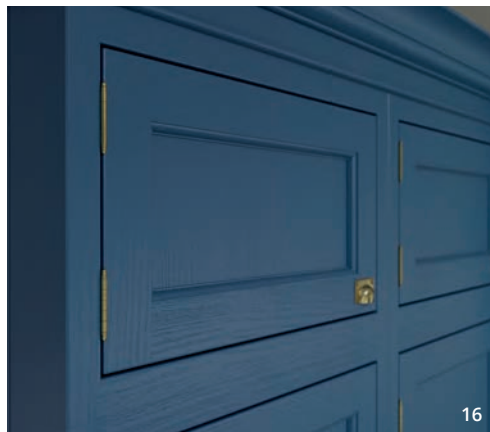




15



17



16



- 15 Belgravia kitchen painted Parisian Blue and Stone. Worktop is Calacatta Porcelain.
- 16 Antique pewter Amerock hinge.
- 17 Central island showing integrated solid oak trays and chopping boards.

Handles: K1-192 and K1-194 (see pages 214 & 215).



18



19



20

18 Central island with curved doors and skirting plinth and open wall display unit with curved doors.
 19 Larder unit featuring oven housing and cornice with undercornice.
 20 Curved base door with skirting plinth.





ALDANA

The stunning simplicity of the Aldana shaker-style door is accentuated by its narrow frame, providing a refined look and feel. This door is accompanied by a host of contemporary accessories that will expand your design options and create a kitchen that meets all your expectations.

- 1 Aldana kitchen painted Airforce and Stone. Worktops are Valterra Quartz (island) and Tundra Quartz (base units and dresser).
- 2 Dresser displaying feature frames with horizontal bars and acute angled cornice. Also shows beautiful end panels on the wall and base, created with pilasters and feature plinth.

Handles: K1-195 and K1-198 (see pages 214 & 215).





3

- 3 Central island featuring underplinth and narrow pilasters to create a 'framed' look.
- 4 Solid oak inset cutlery organizer.
- 5 Feature end panel detail on island unit, tallhousing providing copious storage space and ornate overmantle.



4



5

CLONMEL

Characterised by its wide frame and deep profile, this chunky shaker-style door makes a robust statement with its formidable appearance. Whether you choose to have your kitchen painted, stained, or both, Clonmel is truly timeless and is enhanced by the inclusion of its many exclusive accessories.

1 Clonmel kitchen painted Light Grey and stained Anthracite. Worktop is XGloss Natura Quartz. Also shows central island with open shelving detail and tall oven housing.

Handles: K1-214 and K1-208 (see pages 216 & 217).





2



3



- 2 Freestanding dresser including plain frames complete with Flemish glass.
- 3 Base unit run completed by curved doors each end.
- 4 Detail showing island end panel with underplinth, wall unit frames with Flemish glass and L-shaped floating shelves.



4



5 Clonmel kitchen painted Stone and stained Light Oak. Worktop on base units is Nebula Lagoon Quartz and chunky island worktop is Nebula Cygnus Quartz. Also shows oven housing surrounded by chunky frame.

Handles: K1-147 (see pages 214 & 215)



5



1



2



- 1 Georgia kitchen painted Stone and Porcelain. Worktop is Marble Carrara. Also shows open wall unit with plate rack, worktop dresser with plain glazed frames and feature overmantle.
- 2 Unique island design incorporating curved doors, plain glazed frames, chunky pilasters and underplinth.

Handles: K1-156 K1-159 (see pages 214 & 215).

GEORGIA

Offering a huge number of options when it comes to colour, the Georgia kitchen, featuring a shaker-style door with smooth painted finish, is ideal for those who like to experiment! Include some feature components such as curved doors, a plate rack or classic overmantle to create the ultimate kitchen space.



3

- 3 Simple overmantle design ideal for displaying treasured items.
- 4 Georgia kitchen painted Light Grey. Worktops are Bianco Carrara White Marble (back base units) and Rugged Concrete Quartz (island and dresser). Also shows open wall unit with keystone pelmet, extensive dresser unit with feature oak shelving and central island with double door end panel.

Handles: K1-165 (see pages 214 & 215).



4

JEFFERSON

The quintessentially traditional design of the Jefferson door, with its raised centre panel and defined grain painted finish, exudes charm and sophistication. Choose from an extensive selection of both standard and made to order accessories to devise a kitchen that is totally unique and special.



- 1 Pastry bench with solid oak slatted base shelf and worktop.
- 2 Worktop dresser featuring Edwardian carved frames.
- 3 Jefferson kitchen painted Light Grey and Gun Metal Grey. Worktop is Honed Marble.

Handles: K1-168 (see pages 212 & 213).





KENSINGTON

The innovative Kensington design with sloped internal profile and prominent v-grooves offers a contemporary twist on the original shaker style. Available in numerous colours, the visible grain on this versatile door provides a look of true authenticity.



1 Kensington kitchen in Light Grey. Worktop is Bardiglio Nuvolato Marble. Also shows island with open shelving and back run incorporating tall plain glazed frames.

Handles: K1-157 and K1-160 (see pages 216 & 217).

2 Kensington kitchen in Mussel and painted Lava. Worktop is Bianco Carrara Marble.
Also shows window bench seating, slim mantle shelf design and modern square cornice.

Handles: K1-180 (see pages 214 & 215).





3 Kensington kitchen in Dust Grey and Light Grey. Worktop is Snowy Ibiza Quartz.

Handles: K1-176 and K1-170 (see pages 216 & 217).



MADISON

Effortlessly chic and stylish, the Madison shaker door with v-groove makes an impressive statement with its simple detailing and selection of accompanying designer accessories. Classic in both function and form Madison will fit happily into any sized space to bring you a kitchen that works hard and looks fabulous.



- 1 Madison kitchen painted Cashmere and Graphite. Worktop is White Storm Quartz. Also shows tall unit with small glazed frames.
- 2 Simple flat canopy design flanked by double panel feature doors.
- 3 Central island with feature door end panel and skirting plinth, and solid oak inset trays and chopping boards.

Handles: K1-156 and K1-159 (see pages 214 & 215).





- 4 Wall units boast Damascus carved frames and base units feature s-shaped doors.
5 Madison kitchen painted Light Grey. Worktop is Lyra Quartz.

Handles: K1-168 (see pages 212 & 213).





WAKEFIELD

The internal bead profile detail used in the Wakefield door adds extra depth and contour to your overall kitchen design when combined with any of the broad number of accessories on offer in this stunning range. Take advantage of the extensive painted colour palette which allows you to mix and match with total freedom.

- 1 Wakefield kitchen painted Mussel and Parisian Blue. Worktop on back run is Iced White Quartz and solid oak on island. Also shows simple overmantle design and central island with feature door end panel.
- 2 Dresser with double glazed feature doors and oak open shelving.

Handles: K1-172 and K1-169 (see pages 214 & 215).





3



6



4



5

- 3 Wakefield kitchen painted Lava. Worktop is Blanco Maple Quartz. Also shows central island with solid oak conical pedestal, inset trays and chopping boards.
- 4 Dresser with glazed feature frames and open display area.
- 5 Dresser with double panel feature doors and skirting plinth.

Handles: K1-156 and K1-159 (see pages 214 & 215).



7



8

- 6 Wakefield kitchen painted Ivory, Stone and Lava. Worktop is Bianco Carrara Marble.
- 7 Tall appliance housing with traditional high cornice.
- 8 Small glazed feature frames.

Handles: K1-86 (see pages 212 & 213).

WINDSOR SHAKER

At the contemporary end of the scale, the innovative construction of the Windsor Shaker door ensures high quality durability combined with an attractive appearance. With an appealing woodgrain texture, this door can be painted, opening up of a myriad of design possibilities.



- 1 Glazed feature frames.
- 2 Windsor Shaker kitchen painted Biscuit and Lava. Worktop is Crema Stellar Quartz.

Handles: K1-135 (see pages 214 & 215).



- 3 Windsor Shaker kitchen in Mussel. Worktop is Everest Composite Surface on back run and island and Iroko Solid Wood Worktop (30mm) thick breakfast bar.
- 4 Creatively designed island including open shelving and timber breakfast bar.

Dramatic Overtones

Strong colours, bold textures and innovative styling are key features of the Dramatic Overtones collection. Designed for those with an adventurous spirit, these kitchens will make an audacious lifestyle statement. The use of compelling and unique finishes including a weathered metal look and textured timbers provide the perfect canvas to showcase these contemporary door styles and accessories.



SETTING THE SCENE

When it comes to Dramatic Overtones there is no holding back. It is all about making a bold statement and powerful colours are the key to ensuring your dramatic kitchen is a success. Strong oranges, greys and blues are prevalent and when combined with finishes such as oxidised copper and bold textures such as cross scratched oak you will create a kitchen space that you will never forget.



ZOLA, REZANA & FERRO

Three door styles that were born to live together, the Zola, Rezana and Ferro ranges celebrate their simple construction by sporting a spectacular selection of finishes. Rezana, with its cross scratched timber finish is the perfect complement to Zola's matte finish and Ferro's unique oxidised copper look, resulting in a match made in heaven.





2



3



5



4



- 1 Island features Ferro in Oxidized Copper and tall ovenhousing features Rezana in Espresso Oak. Worktop is Cemento Quartz.
- 2 Larder with Zola painted Lava doors and featuring open shelving in Rezana Espresso Oak.
- 3 Detail showing handleless rail system painted Lava with Ferro drawer fronts in Oxidized Copper.
- 4 Detail showing brushed, cross scratched finish of the Rezana in Espresso Oak.
- 5 Open shelving with recessed LED lighting.

Handles: K1-158 (see pages 216 & 217).



ALDANA

The sophistication of the Aldana door is given a dynamic injection of colour to create a decidedly modern look. Innovative design features and uncomplicated styling emphasise the clean lines of this versatile door and result in a contemporary dream space.



1 Aldana kitchen painted Graphite. Worktop is Keyla Quartz.

Handles: K1-197 and K1-200 (see pages 212 & 213).



2 Central island displaying double door end panel framed with underplinth and chunky pilasters.





3 Aldana kitchen painted Deep Heather and Lavendar Grey. Worktop is Charcoal Soapstone Quartz on island and Serena Quartz on back run. Also shows suspended island supported by chunky posts.

4 Feature end panels provide finishing touch to wall and base units. Also shows plain glazed frames.

Handles: K1-206 (see pages 218 & 219).





5



6



5 Bring your kitchen colours to other parts of your home such as the utility area.
6 Detail showing enhanced vibrant grain of the ash timber on painted drawer front.

ZOLA & FERRO

Push the limits of your imagination with the combined appeal of Zola Matte and Ferro. Shown here displaying a mesmerising colour mix of smooth brass and striking blue, this kitchen shows that a simple slab door construction does not have to be boring. Exposed brick walls, modern patio door frames and dark timber elements enhance its personality.

- 1 Zola painted dark blue (using our Colour Matching Service, see page 204) and Ferro painted Brass. Worktop is Carbono Quartz.
- 2 Handleless rail system painted Graphite provides a clean, streamlined look.





3



- 3 Innovatively designed storage unit for displaying books and household items, also used as a doorway surround.
- 4 L-shaped island with dark timber breakfast bar.

Handles: K1-223 (see pages 216 & 217).



4



FLORENCE

Traditionally known for its classic style, the Florence door, with its internal bead, exposes its lively side with the addition of a vibrant colour mix. Adorned with key features such as an ornate overmantle and oak open shelving this kitchen maintains its time-honoured appeal whilst boasting eclectic charm.



- 1 Florence kitchen painted Deep Heather and Viridian. Worktop is Moorland Fog Quartz on base units and solid oak on island. Island features double door end panel and underplinth.
- 2 Dresser with oak open shelving flanked by door/drawer combination. Also shows application of pilasters throughout kitchen design for an overall freestanding look.
- 3 Spice drawer and solid oak inset tray combination.

Handles: K1-192 and K1-194 (see pages 214 & 215).



4



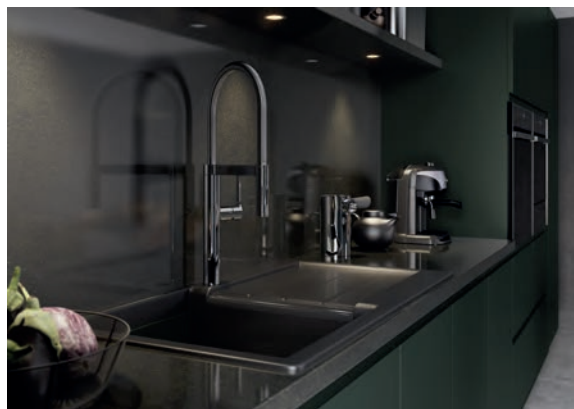
- 4 Mantel shelf supported by ornate corbals.
- 5 Frame with integrated solid oak tray set sits alongside chunky pilaster.



5

STRADA

Strada's cutting-edge door with integrated J-handle perfectly accommodates a blend of daring colour and rudimentary styling. A kitchen created for those who appreciate minimalism, it offers both efficiency and luxury in one, and is brought to life by the inclusion of sleek appliances, brightly coloured decorative elements such as crockery and strategic lighting.



1 Strada kitchen painted Deep Forest. Worktop is Black Noir Quartz. Create the ultimate contemporary look by replacing wall units with floating shelves that house recessed spot lights.





2

- 2 External feature posts on the island allow for the continuous flow of the Strada J-handle below the worktop. Use spotlights for dramatic effect in recessed areas.
- 3 Use a shark's nose profile on your island worktop to tie in with the overall angular look of the kitchen design.



3





4 Strada Gloss kitchen in Porcelain and Graphite. Worktop is Blanco Stellar Quartz. Wall units adorned by letterbox feature frames.





ZOLA

The ultimate example of unconventional styling, the Zola door comes to life here with a vivid mix of colours and accessories. Emphasised by a mock inframe surround, this kitchen welcomes a diverse array of decorative elements such as contrasting floor finishes and brightly coloured furniture and upholstery to show its quirky side.



- 1 Zola kitchen painted zingy orange (using our Colour Matching Service, see page 204), Dust Grey and Graphite. Worktop is Titanium composite surface. Achieve a framed look for this slab door by including a moulding surround.
- 2 LED strip lighting above and below wall units can add further drama to your kitchen design.

Handles: K1-225 (see pages 214 & 215).

3 Maximise the use of awkward spaces such as the alcove shown below by introducing open shelving, which creates easy access to crockery or food items.



GEORGIA

Feeling right at home in a roomy environment, the Georgia kitchen shines with an abundance of colour and style. The commanding central island becomes a focal point when highlighted by a surrounding geometric tile design and copious amounts of light are provided by overhead skylight windows.

- 1 Georgia kitchen painted Airforce. Worktop is Montblanc Quartz. Also shows open shelving unit in Parched Oak and mantle shelf.
- 2 Smooth painted finish of the Georgia shaker door.
- 3 Island with integrated open shelving.

Handles: K1-165 (see pages 214 & 215).





4 Unit featuring display area with Parched Oak back panel and shelving painted Airforce.





CLONMEL

With its solid and enduring presence, Clonmel remains an established favourite for those who acknowledge high quality. This oak painted door can showcase any daring colour with ease and is highlighted by the incorporation of subtly coloured walls and a dynamic floor design.



1 Clonmel kitchen painted Stone and Parisian Blue. Worktop is Snowy Ibiza Quartz. Also shows slim style mantle shelf with designer corbals and central island with integrated seating area.

Handles: K1-185 (see pages 214 & 215).

JEFFERSON

The traditional Jefferson raised panel door demonstrates transitional flair by finding its place in a modern setting. White worktops, brick-styled wall tiles and a stainless steel extractor fan sit alongside a contrasting colour mix to show Jefferson's diverse appeal.

- 1 Jefferson kitchen painted Shell and Marine. Worktop is Iconic White Quartz with integrated solid oak chopping board. Island features curved pilasters for a softer look and dresser on back wall boasts double glazed feature frames.
- 2 Stylish bowfront pan drawers for maximum storage capability.

Handles: K1-172 and K1-169 (see pages 214 & 215).



MADISON

A comprehensive range of colours, textures and patterns help to characterise the modern Madison shaker kitchen. With a combination of compelling features such as exposed brick, hexagonal wall tiles and a lively floor design, the retro feel of this dynamic space is realised.

- 1 Dresser top with Georgian frames.
- 2 Maximise your kitchen space by including a recessed tall appliance housing unit.
- 3 Madison kitchen painted Marine and Light Teal. Worktop is Iconic White Quartz.

Handles: K1-155 and K1-158 (see pages 216 & 217).



1



2



3

Sleek Serenity

Smooth textures and subdued tones capture the essence of the Sleek Serenity collection. Created without compromise, these kitchens provide a dream setting for those who appreciate the benefits and beauty of ergonomic design. Usually occupying a bright and airy space and using sleek finishes and minimalist features, we show what is needed to build your modern paradise.



SETTING THE SCENE

Capture a sleek and serene feeling with the use of soothing tones and textures that will help to create your home's special sanctuary. The use of a mellow colour palette including greys, ivory and white is key and when combined with an abundance of space and light will result in a kitchen that will bring out your inner calm. Incorporate natural materials such as timber, stone or marble to establish a sense of contrast and balance to your design.





ZOLA & TAVOLA

A stunning example of what Sleek Serenity really means, the combined features of the Zola and Tavola doors bring beauty and functionality together effortlessly. A sense of balance is achieved with contrasting colours and finishes and an open plan room design allows for plenty of free movement around the kitchen.



- 1 Zola Gloss in White and Tavola stained Parched Oak. Worktop is custom made concrete. Crisp white cabinets and cool concrete are offset beautifully by the warmth of natural timber.
- 2 Handleless aluminium rail system dispenses the need for handles. Can also be painted in any of our 27 standard colours.



3 Incorporate a breakfast bar into your kitchen design to separate living and cooking areas.



4 Zola Gloss in Dust Grey and Tavola stained Anthracite. Worktop is Marengo Quartz. Handleless rail system painted Dust Grey is used for a clutter-free look.



4

5 Zola Gloss in Cashmere surrounds the wine cooler for a subtle addition of a third colour.



5



6 An example of how different colours and finishes work together to provide stunning results.
7 The Anthracite stain used on the Tavola door accentuates its unique horizontal grain.



8 Floor to ceiling cabinetry provides ample storage space.

STRADA

A streamlined, seamless flow is what the Strada door offers with its integrated J-handle design and when coupled with a subtle colour palette creates perfect kitchen harmony. The inclusion of feature accessories such as curved pilasters or letterbox frames provide an interesting focal point. Available in matte or high gloss finishes.



1 Strada Matte painted Porcelain. Worktop is Silver Grey composite surface. Also shows curved pilasters on the island and the main kitchen. Dark timber flooring creates a pleasing contrast.

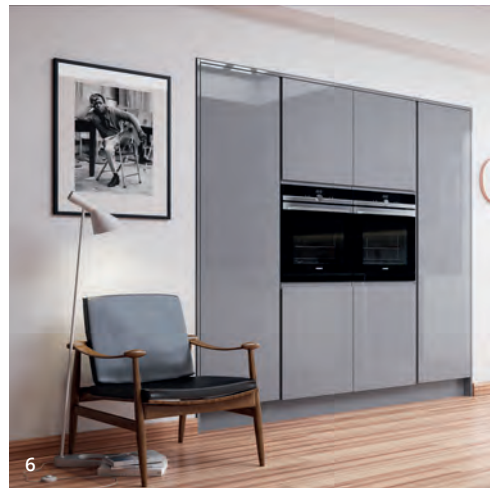




2 Strada Matte painted Light Grey (wall and base units) and Dust Grey (island). Worktop is Boston Concrete. Traditional meets modern with ornately styled home decor sitting harmoniously alongside contemporary kitchen cabinetry.



2



- 3 External feature posts on the island allow for the continuous flow of the Strada J-handle below the worktop.
- 4 Install LED strip lighting in strategic areas to put focus on kitchen crockery or units.
- 5 Strada Gloss in Light Grey. Worktop is White composite surface. Also shows feature letterbox frames and floating larder unit.
- 6 Create extra space in your kitchen with a recessed tall appliance housing unit.
- 7 Strada Gloss in Dust Grey. Worktop is Calacatta Gold Quartz.





ZOLA

The adaptability of Zola's painted slab design allows for a myriad of possibilities when it comes to devising your serene kitchen. Available in a gloss, matte or matte painted finish, you can achieve a sleek and spacious looking kitchen through a choice of muted colours and clever design layout.



1 Zola Gloss in Porcelain and Graphite. Worktops are Lyra Quartz (back run) and Negro Anubis Quartz (island). Also shows handleless rail system with aluminium finish and designer breakfast bar.



2



3

- 2 Introducing textured finishes such as timber and brick to your gloss kitchen adds creative variation to your overall design.
- 3 Zola Gloss in Dust Grey. Worktop is Snowy Ibiza Quartz.
- 4 Create perfect symmetry with the positioning of your kitchen cabinets.

Handles: K1-147 (see pages 214 & 215).



4



5 Zola Matte in Light Grey and Graphite. Worktops are Lagoon Quartz (back run) and Dreis Quartz (island). Also shows handleless rail system with aluminium finish.

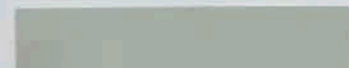
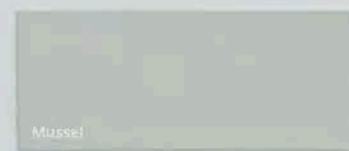
Urban Utopia

The enticing sights and sounds of the city are brought home with our Urban Utopia collection. Ideal for more compact homes these kitchens create a cool city vibe with an eclectic mix of colours, textures and designer features. Making best use of the space available, you can experience a highly functional and aesthetically pleasing kitchen that delivers that uber urban feel.



SETTING THE SCENE

Whether you own a city or a country dwelling, if you want an urban aesthetic to grace your kitchen then you shall have it! Considered to be generally modern in style you can add classic touches to your metropolitan inspired design to increase cosiness and comfort. Elements such as exposed brick or concrete walls, reclaimed flooring and immense multi-panel windows are hallmarks of an old city apartment and fit in beautifully with many contemporary kitchen designs. Add some real personality with unconventional upholstery designs or a collective mix of colours and finishes.





STRADA & TAVOLA

The uncomplicated pairing of the Strada and Tavola doors really excels when it comes to the smaller kitchen, providing a clean and orderly environment. Both ranges offer a large number of accompanying accessories that are easily adaptable so that you can devise specialised features that fit your particular space.



1 Strada Matte painted Lava and Tavola stained Carbon Oak. Worktop is Tundra Grey Marble. The horizontal grain of the Tavola cabinets helps elongate the look of the kitchen and the island has been custom made to fit its unique shape.

Handles: K1-248 (see pages 218 & 219).

- 2 Strada Matte features a completely smooth finish.
- 3 The use of the worktop material to create a handy shelf sits in contrast to the Carbon Oak shelf above and provides added display or storage space.
- 4 Tavola real wood veneer displays its impressive horizontal grain, brought out beautifully by a rich Carbon Oak stain.



STRADA & ALDANA

Custom designed to fit an unusual space, this U-shaped kitchen brings together a fusion of styles, colours and finishes. A fine example of apartment style living, the calming colour scheme based on Strada's gloss white door is enlivened by a splash of texture and colour with the inclusion of the Aldana larder in vivid green.



- 1 Strada Gloss in White and Aldana painted vivid green (using our Colour Matching Service, see page 204). Worktop is Keon Quartz.
- 2 The Aldana freestanding larder unit with painted ash grain finish makes itself at home beside Strada's gloss cabinets.

Handles: K1-205 (see pages 214 & 215).





REZANA & FERRO

A true representation of the urban dream, this mix of Rezana's rich real wood veneer and Ferro's cool iron paint finish work to create an exciting habitat for lovers of the 'industrial' look. This minimalist kitchen loft design is offset nicely by signatures of the industrial style such as exposed brickwork and piping and is given a touch of vibrancy with the inclusion of an interior herb garden.



1 Rezana stained Carbon Oak and Ferro painted Iron. Worktop is Orix Quartz. Also shows custom designed vessel to hold potted herbs.

Handles: K1-234 (see pages 218 & 219).





- 2 Pan drawers showing solid oak secret cutlery drawer with dovetail joints and inconspicuously positioned matte black handles.
- 3 The iron finish of Ferro sits comfortably alongside Rezana's dark timber.
- 4 An example of less is more, this kitchen boasts base cabinets only to accommodate this unconventional space. Floating shelves provide added storage.





TAVOLA

Tavola in real wood veneer brings a trio of complementary finishes together in this rectilinear kitchen design. Floor to ceiling units are cleverly used to maximise storage capacity and extensive open shelving creates a feeling of spaciousness as well as offering a place for displaying cherished items. The inclusion of a compact central island provides a useful eating and food preparation area.



1 Tavola painted Shell and Dust Grey and stained Weathered Silver oak. Worktops are Piatra Grey Quartz (island) and Fresh Concrete Quartz (back kitchen run and low level units).
 2 Low level cabinets and floating open shelving create a focal point in the living area.
 Handles: K1-181 and K1-188 (see pages 214 & 215).



3



4

- 3 Tall corner unit with integrated open shelving stained Weathered Silver oak.
- 4 Slimline handles that drape over the top of the door provide a minimalist look with a practical purpose.
- 5 Compact island with raised breakfast bar shelf and cubby hole storage.



5



ZOLA, FERRO & REZANA

An overall retro feel dominates the collection of door styles, colours and finishes that make up this exciting and decidedly 'alternative' kitchen. Warmth is provided by the use of copper and light oak, helping to bring the dark tone of Zola painted Marine blue to life and to establish a sense of familiar comfort.



1 Zola Matte painted Marine, Ferro painted Copper and Rezana stained Light Oak. Worktop is Black Quartz. Also shows a bespoke manufactured sideboard in Rezana real wood veneer stained Light Oak.

Handles: K1-201 (see pages 212 & 213).





2



3



4

- 2 Bespoke bookcase design using Rezana stained Light Oak.
- 3 Handleless Ferro doors feature tip-on opening mechanism in order to create a seamless look. The richness of copper is scattered throughout the kitchen and adjacent living area creating a warm and inviting environment.
- 4 Open L-shaped shelving helps to break the solidity of a continuous run of wall units.



1

STRADA

Ideally suited to contemporary urban living Strada shows its versatility by offering numerous accessories that can be used to develop your own unique look. Whether you appreciate the softness of curves or prefer simple straight lines Strada has just what you are looking for. Available in a gloss or matte painted finish.

- 1 Detail showing open curved door with integrated J-handle exposing colour matched internal shelving.
- 2 Strada Gloss in Cashmere. Worktop is Belgium Bluestone Limestone. Central island features plinth strip lighting for the ultimate designer look.



2



3 Strada Matte painted White and Graphite. Worktop is Iconic White Quartz.





1

ZOLA

The ever popular industrial look that embraces key design aspects such as interior brickwork, concrete and exposed pipes and ceiling beams, allows Zola to sit unassumingly alongside, encouraging comfortable living. Available in a gloss or matte finish.

- 1 Zola Gloss in White and Light Grey. Worktops are White Marble and Solid Oak. Also shows dual level island creating ample seating space.
- 2 Bespoke designer storage and display unit.

Handles: K1-185 (see pages 214 & 215).



2



- 3 Zola Matte in White. Worktop is Niebla Quartz. Shows handleless rail system with aluminium finish.
- 4 An interesting door and drawer configuration adds an exciting element to this simple design.



Country Chic

With a varied selection of warm furnishings and punchy painted finishes Country Chic offers a taste of the traditional with an edge. Retaining all the rudimentary design elements of the much loved rural kitchen, our Country Chic collection adds a contemporary twist with the inclusion of daring colour combinations and unique accessories. Revel in this fresh new look at a time-honoured favourite.



SETTING THE SCENE

Many people aspire to owning a home in the countryside. This may only be a fantasy for some, but it is possible to experience a taste of the country no matter where you live. Introduce a rustic feel to your home with the inclusion of popular country favourites such as T&G panelling, visible ceiling beams and natural materials such as timber, slate or stone. Add a chic touch with contemporary accents like vibrant colour mixes and innovative cabinet configurations and you will end up living the rural dream.



ALDANA

A kitchen that ideally lends itself to a rustic look, Aldana's slim frame accommodates the hallmarks of country living perfectly. Whether you choose a more traditional approach with T&G panelling, earthy colours and pastoral style accessories or decide to go a more modern route with dynamic colour combinations and designer styling, your country kitchen will evoke that comforting, lived in feel.

- 1 Use T&G panelling to great effect by bringing it through to spaces that extend off your kitchen. Shown here is an entrance way featuring bench seating and T&G panels.
- 2 Aldana kitchen painted Viridian. Worktop is Entzo Natural Quartz. Also shows use of universal pilaster to create a 'framed' look and plain glazed frames on worktop dressers and on top of far larder unit.

Handles: K1-210 (see pages 218 & 219).





3 Central island with solid oak inset chopping boards.
4 Designer canopy with oversized, shaped corbels sits majestically above the central island that boasts convenient open shelving.





5 Show your fun side with this Aldana kitchen painted pale yellow (colour matched) and Dust Grey with Brilliant White mock inframe. Worktops are Valterra Quartz (back run) and Grey Quartz (island). Also shows open display wall shelving with decorative brackets. Central island is embellished with feature end panels.

6 For a different look match your mock inframe to your door. Here we have used all Dust Grey. You can also introduce a funky floor design using a multi coloured geometric pattern.

Handles: K1-202 (see pages 214 & 215).





CLONMEL

You might think that Clonmel was actually devised specifically with rural homes in mind with its chunky appearance and commanding appeal. Although versatile in practice Clonmel definitely sits most agreeably in a country setting, offering a touch of class and quality with its oak construction and range of accompanying accessories.



1 Clonmel kitchen painted Light Blue and Gun Metal Grey. Worktop is Calacatta Gold Quartz. Also shows island with solid oak slatted open shelving, chunky pilasters to create a 'framed' look and feature end panels that also appear at the end of the base units.

Handles: K1-215) and K1-212 (see pages 212 & 213).





- 2 Dresser with mock inframe construction and designer storage and display area including oak shelving and wine rack.
- 3 Rustic barn style doors, timber floor and ceiling beams are hallmarks of the rural kitchen and complement Clonmel's farmhouse design.



2



3



- 1 Rustic style brass handles and knobs with horizontal detailing complement the linear design of the kitchen.
- 2 Georgia kitchen painted Pantry Blue. Worktop is Statuario Maximus Quartz. Also shows oxidised brass strips that form bespoke designer backsplash to tie in with the look of the handles.

Handles: K1-221 and K1-223 (see 216 & 217).

GEORGIA

Open to a host of colour combinations this is your chance to create a rural kitchen with a difference. Georgia's smooth finish and traditional shaker style provide an impeccable canvas to which you can apply elements that reflect your true personality. Regardless of your choice of decor, appliances or colour Georgia adapts itself entirely, resulting in a country kitchen paradise.





3 Oak larder unit showing convenient internal storage including spice rack, open shelving and drawers designed to view contents at a glance.

4 Elegantly designed overmantle flanked either side by double glazed display units.



3



4





1

- 1 Florence kitchen painted Graphite and Light Grey. Worktop is solid oak. Also shows island with overhang adorned with decorative brackets and worktop dresser with glazed frames.
- 2 Traditional beaded panels grace either end of the island. Also shows solid oak inset tray.

Handles: K1-171 and K1-168 (see pages 212 & 213).



2

FLORENCE

Rural design staples such as open ceiling beams, natural floor materials and traditional style windows set the scene here for the Florence country kitchen. No matter what size of space you are dealing with you can devise a kitchen with real flair by incorporating key accessories such as an overmantle, pastry bench, T&G panelling and solid oak inset trays.

- 3 Florence kitchen painted Dust Grey and Porcelain. Worktops are solid oak (island) and Kensho Quartz (back run). Also shows central island/pastry bench and solid oak inset tray and spice drawer.

Handles: K1-175 K1-169 (see pages 214 & 215).



3





4 Florence kitchen painted Stone and Light Grey. Worktop is Kairos Quartz. Also shows compact canopy and island with integrated pastry bench.



JEFFERSON

The ornately constructed Jefferson door with its moulded, raised centre panel will bring your rural space to a different level. Available in oak or with any painted finish and offering a large selection of specially appointed accessories, the number of design possibilities are endless with this classically elegant kitchen.

- 1 Jefferson kitchen in oak and painted Ivory. Shows island with boxed pilasters and protruding Belfast sink.
- 2 Floor to ceiling cabinetry provides ample storage and features beautiful glazed Georgian style frames.

Handles: K1-104 (see pages 216 & 217).





3 Jefferson kitchen painted Mussel. Worktop is Calacatta Gold Quartz. Shows interesting island design with curved doors encompassing a wine cooler.

Handles: K1-86 (see pages 212 & 213).





- 4 Jefferson kitchen painted Stone and Gun Metal Grey. Worktop is Black Pear Granite. Island features made to order curved barrel unit with solid oak circular butcher's block and integrated chopping boards and open wine rack. A rustic oak mantle beam sits above the cooker, creating a real farmhouse look. Some units show cornice with curved corners.
- 5 Made to order Gothic carved frames introduce a sophisticated look to any dresser.

Handles: K1-159 (see pages 214 & 215).





1

KENSINGTON

Show your country fun side with a Kensington shaker style kitchen incorporating door and accessory combinations ideally suited for compact spaces. The door's sloped inner profile makes it unique and its simple style and finish means it is perfect for a busy family lifestyle.



2



1 Kensington kitchen in Ivory. Compact island features handy open shelving area and wine rack, suited to smaller kitchens.

Handles: K1-171 and K1-168 (see pages 212 & 213).

2 Kensington kitchen painted Sage Green. Island with curved corners introduces an ergonomic flow to the kitchen.

Handles: K1-152 (see pages 216 & 217).

MADISON

This layout for Madison is clearly designed for entertaining. With its island that incorporates a bench seating area it creates the ideal dynamic for bringing family and friends together to socialise in the kitchen. The warmth of rich oak and ivory evokes an inviting feeling and special designer features such as plate rack and open shelving offer an abundance of storage space.

1 Madison kitchen in Oak and painted Ivory. Worktop is Black Granite. L-shaped island features integrated bench seating, curved pilasters and doors and open shelving for display and storage. Also shown is plate rack with glazed framed cabinets either side.



4 Wakefield kitchen in Oak and painted Stone. Curved doors complete both ends of the base units and tie in with the curved overmantle which is flanked by glazed frames. Extended plate rack provides plenty of storage.



WAKEFIELD

Whether you opt for oak, a painted finish or both, the Wakefield kitchen will take on a rustic feel when accompanied by traditionally styled accessories and natural floor materials such as stone or timber. A large central island provides a focal point where food preparation and dining can take place simultaneously.





2

- 2 Georgian glazed feature doors sit either side of slimline mantle shelf. Also shows universal pilaster creating a 'framed' look and window bench seating.
- 3 Stylish island design with square end tables featuring solid oak slatted base and end panels with matching door moulding.
- 4 Wakefield kitchen painted Porcelain and Pantry Blue. Worktop is Colonial Cream Granite.

Handles: K1-155 and K1-158 (see pages 216 & 217).



3



4

WINDSOR CLASSIC

With a definitive air of tradition the Windsor Classic kitchen exudes charming sophistication. A true example of fine craftsmanship this kitchen boasts an exclusive selection of accessories that reflect its distinctive nature. The classically styled mantle shelf, plate rack and wine rack help to achieve that farmhouse feel.

1 Windsor Classic kitchen painted Sage Green. Also shown are curved doors, plate rack, wine rack and gun barrel pilasters.



WINDSOR SHAKER

Modern meets country with this stylish Windsor Shaker kitchen. Accentuated by plenty of light shining through skylights and large patio doors, the warmth of the oak finish really comes to life and an attractive contrast is achieved by the inclusion of dark worktops and surrounding wall colour.

1 Windsor Shaker kitchen in Oak. T-shaped island features solid timber breakfast bar with decorative door panels below and curved doors surrounding the wine cooler.

Handles: K1-185 (see pages 214 & 215).



Internals

Add an extra dimension to your kitchen with the inclusion of clever and convenient internal storage. Ranging from cutlery inserts and spice drawers to larger pantry units and larders, you can completely transform the way your kitchen operates by creating organised areas that allow you to locate everything you need easily.

DRAWERS



Double deep pan drawers cleverly hide a secret cutlery drawer within, maximising use of space. All drawer internals are crafted from oak and feature dovetail construction.



Bespoke insert trays will organise your cutlery to ensure everything you need is at hand.



Deep pan drawers allow you to arrange pots and pans so that they are readily accessible.

This tray set features a handy spice drawer with dovetailed construction above a framed solid oak tray (right).



LARDERS



1

- 1 This stunning larder has a place for everything and features spice racks on both doors, scalloped edge drawers and plenty of open shelving.
 2 Four door worktop larder featuring made to order coffee station with cup rail, unique shelving design and storage drawer for holding coffee pods.



2



3



DRESSERS



4

- 3 Larder unit with wine glass holder, wine rack, and specialised scalloped edge drawers that allow you to view contents easily.
 4 Dresser featuring internal bar with wine glass holder, wine rack and antique mirrored glass back panel.

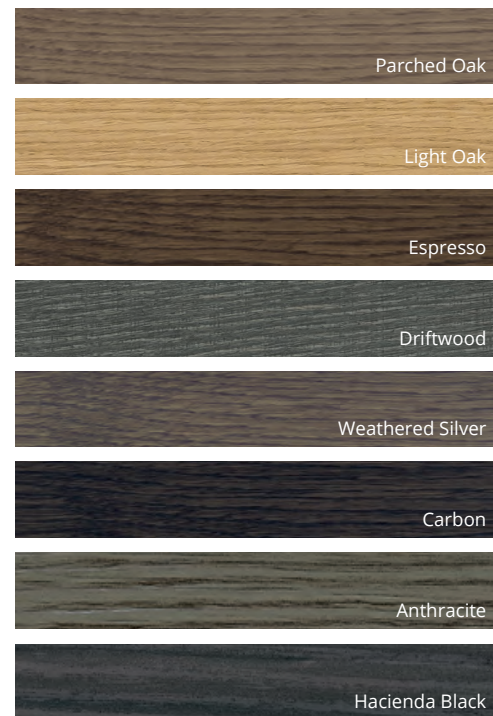
Finish

Whether you opt for painted or stained we have a wide selection of colours and finishes to offer, with a view to designing your ultimate kitchen. As well as having our standard painted and stained finishes we also use specialised techniques to produce a highly unique range of metal paints that when used as a focal feature will set your kitchen design well apart from the rest.

- 1 Florence painted Deep Heather and Viridian.
- 2 Rezana stained Carbon and Ferro painted Iron.
- 3 Ferro in Oxidised Copper.
- 4 Tavola painted Shell and Dust Grey and stained Parched Oak.



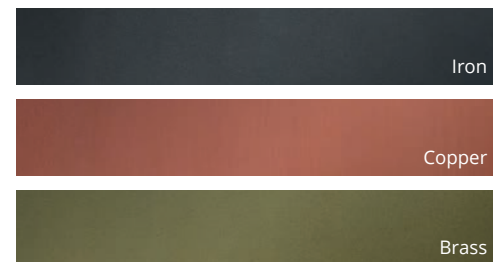
STAIN PALETTE



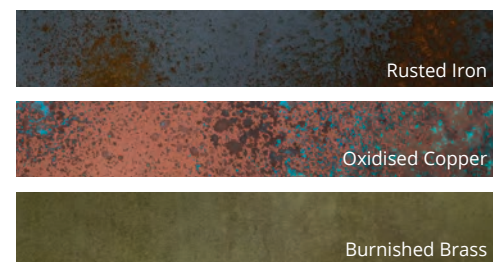
Stains can be applied to Rezana, Tavola and Clonmel only.

FERRO PALETTE

Smooth Metal Finish



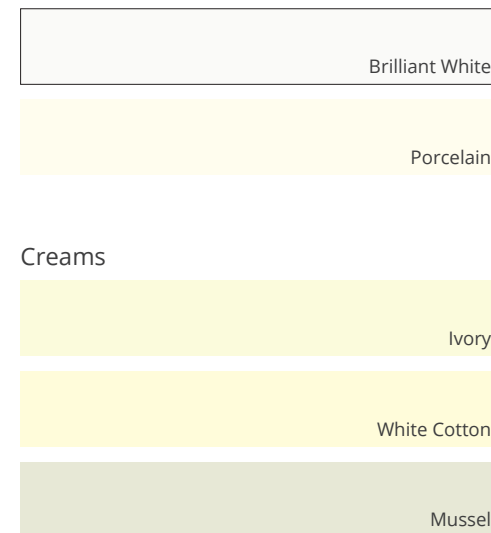
Weathered Metal Finish



Metal paints can be applied to Ferro only.

STANDARD PAINT PALETTE

Whites



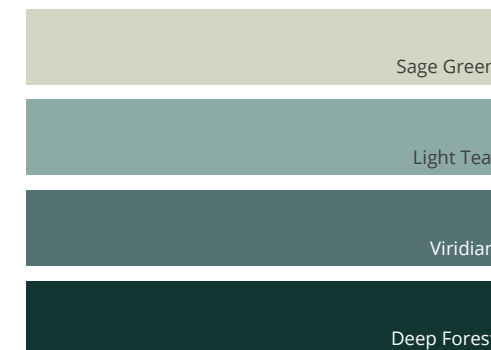
Beiges



Blues



Greens



Greys



Purples



Standard paint colours can be applied to: Aldana, Belgravia, Clonmel, Florence, Georgia, Jefferson, Kensington, Madison, Strada Matte, Wakefield, Windsor Shaker, Windsor Classic, Zola Matte

This document is intended only as a guide and, as no picture can accurately convey colour representation it is suggested you examine our products personally before purchase. Only then can you appreciate the detail of each and every component, the finishes applied and the superior quality. If your chosen finish is not on display, we recommend that you order a sample.

PAINTED TO ORDER

We offer a selection of 27 paint colours in a variety of hues that are applicable to Aldana, Belgravia, Clonmel, Florence, Georgia, Jefferson, Kensington, Madison, Rezana, Strada Matte, Tavola, Wakefield, Windsor Shaker, Windsor Classic and Zola Matte Painted.

PTO

You can request that your kitchen be painted in any number or combination of these colours. For some ranges you will see that they are also available in a selection of Express Colours. These are colours that are popular and therefore we use them to pre-finish a number of our kitchens and make them available in a shorter amount of time. To see which ranges have Express Colours, see pages 206 to 211.

COLOUR MATCHING SERVICE

Choose that 'specific' colour you have been longing after using our Colour Matching Service. It's as easy as you providing a RAL (European Standard) or BS (British Standard) colour reference and we will match it. Applies to Aldana, Belgravia, Clonmel, Florence, Georgia, Jefferson, Kensington, Madison, Rezana, Strada Matte, Tavola, Wakefield, Windsor Shaker, Windsor Classic and Zola Matte Painted.

CMS

STAINED TO ORDER

We offer a selection of 8 stains in a variety of hues that are applicable to Rezana, Tavola and Clonmel.

STO

You can request that your kitchen be stained in any number or combination of these colours. Depending on the grain structure of your chosen door there will be variations in colour from range to range. For instance, Rezana has a more defined grain structure and therefore may display stain colours in a deeper shade.

MADE TO ORDER

Our made to order products were created to accommodate customers who desire alternative sizes or designer features to create a bespoke kitchen. Look for the ranges that this service applies to on pages 206 to 211 and speak to your kitchen designer for further details on what is available.

MTO



- 1 Strada Matte painted Porcelain, an Express Colour.
- 2 Aldana painted pale yellow using our Colour Matching Service.
- 3 Clonmel stained Carbon, stained to order.
- 4 Jefferson featuring made to order bowfront drawers.

Kitchen Ranges (at a glance)

ALDANA

Style: shaker
Finish: ash painted



This door can be painted in any of our 27 standard paint colours or using our Colour Matching Service (see pages 202-204).

Aldana is available in a selection of made to order doors, drawerfronts and accessories (see page 204).

See examples of Aldana on pages 28, 66, 134, 162.

BELGRAVIA

Style: shaker inframe with internal bead
Finish: ash painted



This door can be painted in any of our 27 standard paint colours or using our Colour Matching Service (see pages 202-204).

Belgravia is available in a selection of made to order doors, drawerfronts and accessories (see page 204).

See examples of Belgravia on page 14.

CLONMEL

Style: shaker
Finish: oak painted or stained



This door can be painted in any of our 27 standard paint colours, painted using our Colour Matching Service or stained in any of our 8 standard stains (see pages 202-204).

See examples of Clonmel on pages 32, 96, 170.

FERRO

Style: slab
Finish: painted metals



This door can be painted in any of our 7 metal paint finishes (see page 202).

Ferro is available in a selection of made to order doors, drawerfronts and accessories (see page 204).

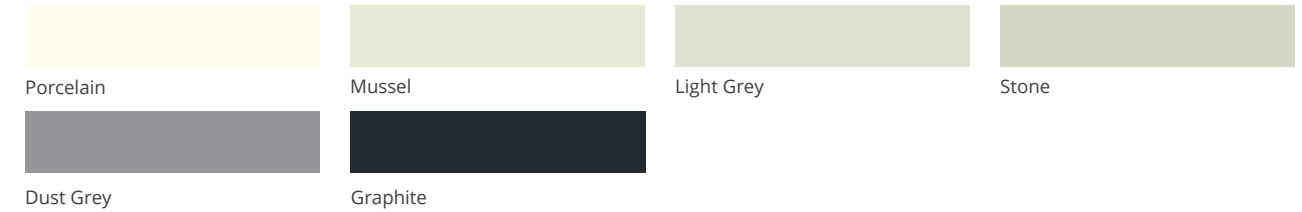
See examples of Ferro on pages 62, 74, 138, 146.

FLORENCE

Style: shaker with internal bead
Finish: matte painted



Express Colours



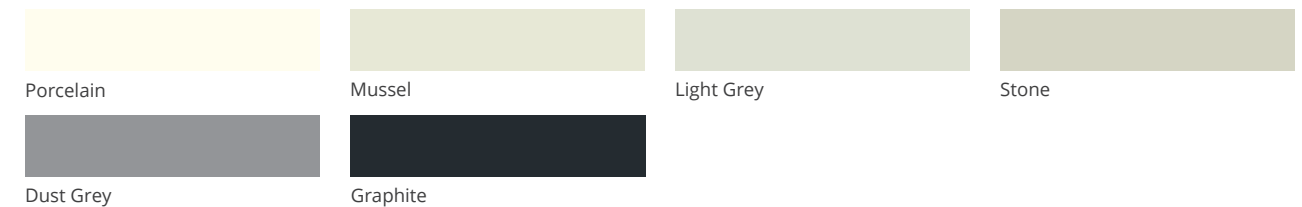
This door can be painted in any of our 27 standard paint colours or using our Colour Matching Service (see pages 202-204). Florence is available in a selection of made to order doors, drawerfronts and accessories (see page 204). See examples of Florence on pages 78, 178.

GEORGIA

Style: shaker
Finish: matte painted



Express Colours



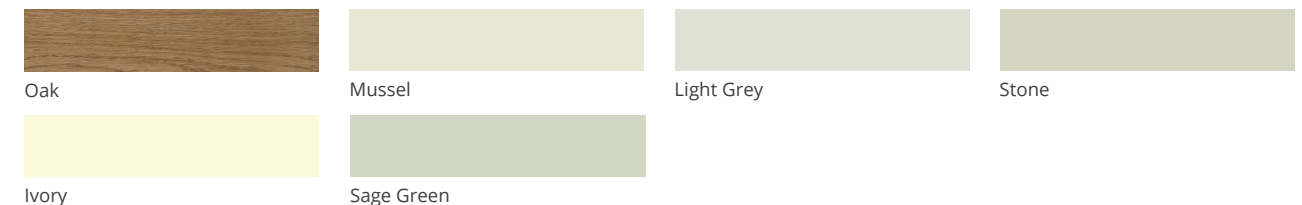
This door can be painted in any of our 27 standard paint colours or using our Colour Matching Service (see pages 202-204). Georgia is available in a selection of made to order doors, drawerfronts and accessories (see page 204). See examples of Georgia on pages 38, 92, 174.

JEFFERSON

Style: square raised panel
Finish: oak or ash painted



Express Colours



This door can be painted in any of our 27 standard paint colours or using our Colour Matching Service (see pages 202-204). Jefferson is available in a selection of made to order doors, drawerfronts and accessories (see page 204). See examples of Jefferson on pages 40, 98, 182.

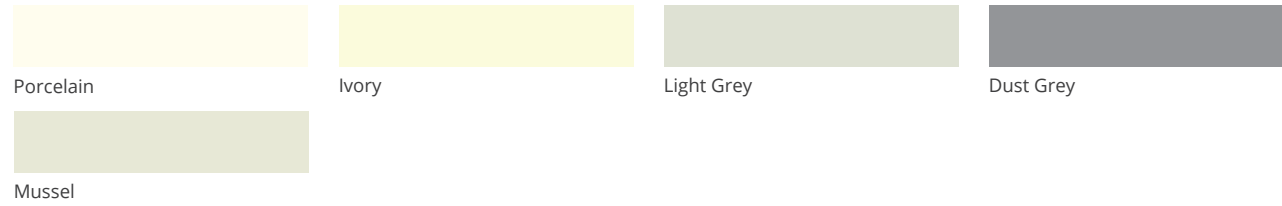
KENSINGTON

Style: shaker
Finish: ash PVC or painted

PTO CMS MTO



Express Colours



This door can be painted in any of our 27 standard paint colours or using our Colour Matching Service (see pages 202-204). Kensington is available in a selection of made to order doors, drawerfronts and accessories (see page 204). See examples of Kensington on pages 42, 188.

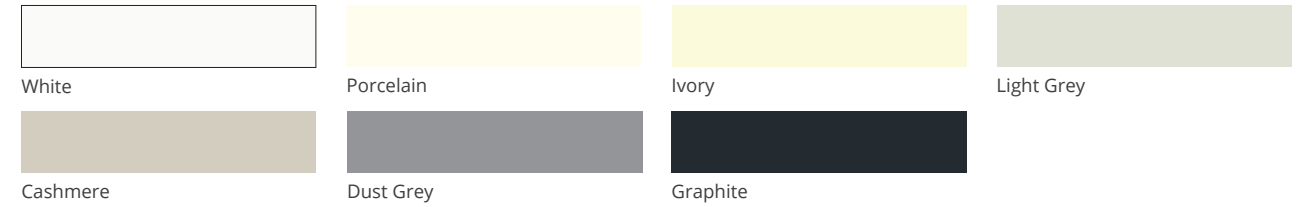
STRADA GLOSS

Style: slab door with integrated J-handle
Finish: polyurethane high gloss

MTO



Express Colours



See examples of Strada Gloss on pages 86, 114, 134.

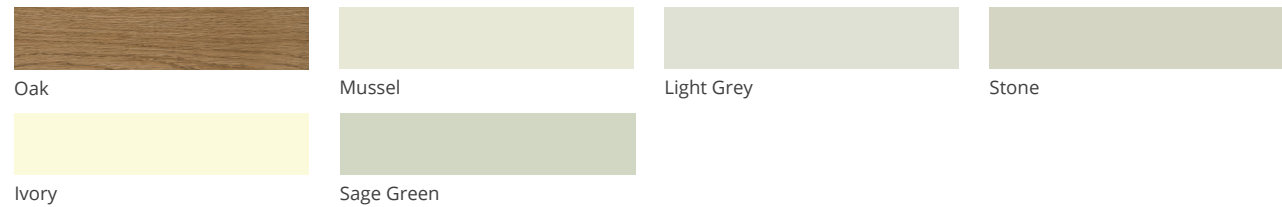
MADISON

Style: shaker with v-grooves
Finish: ash painted or light oak

PTO CMS MTO



Express Colours



This door can be painted in any of our 27 standard paint colours or using our Colour Matching Service (see pages 202-204). Madison is available in a selection of made to order doors, drawerfronts and accessories (see page 204). See examples of Madison on pages 48, 100, 190.

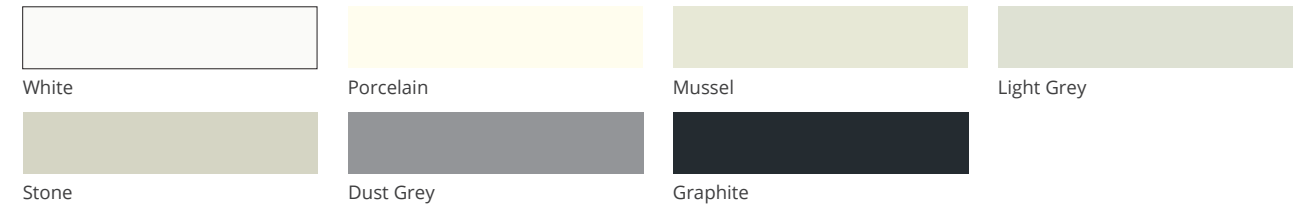
STRADA MATTE

Style: slab door with integrated J-handle
Finish: matte painted

PTO CMS MTO



Express Colours



This door can be painted in any of our 27 standard paint colours or using our Colour Matching Service (see pages 202-204). Strada Matte is available in a selection of made to order doors, drawerfronts and accessories (see page 204). See examples of Strada Matte on pages 82, 114, 130, 152.

REZANA

Style: slab
Finish: oak veneer cross scratched painted or stained

PTO CMS STO MTO



This door can be painted in any of our 27 standard paint colours, painted using our Colour Matching Service or stained in any of our 8 standard stains (see pages 202-204). Rezana is available in a selection of made to order doors, drawerfronts and accessories (see page 204). See examples of Rezana on pages 62, 138, 146.

TAVOLA

Style: slab door with horizontal grain
Finish: oak veneer painted or stained

PTO CMS STO MTO



This door can be painted in any of our 27 standard paint colours, painted using our Colour Matching Service or stained in any of our 7 standard stains (see pages 202-204). Tavola is available in a selection of made to order doors, drawerfronts and accessories (see page 204). See examples of Tavola on pages 106, 130, 142.

WAKEFIELD

Style: shaker with internal bead
Finish: ash painted or light oak

PTO CMS MTO



Express Colours



This door can be painted in any of our 27 standard paint colours or using our Colour Matching Service (see pages 202-204). Wakefield is available in a selection of made to order doors, drawerfronts and accessories (see page 204). See examples of Wakefield on pages 52, 192.

WINDSOR CLASSIC

Style: square raised panel
Finish: ash PVC or painted

PTO CMS



Express Colour



This door can be painted in any of our 27 standard paint colours or using our Colour Matching Service (see pages 202-204). See examples of Windsor Classic on page 196.

WINDSOR SHAKER

Style: shaker
Finish: ash PVC, painted or light oak

PTO CMS



Express Colours



This door can be painted in any of our 27 standard paint colours or using our Colour Matching Service (see pages 202-204). See examples of Windsor Shaker on pages 56, 197.

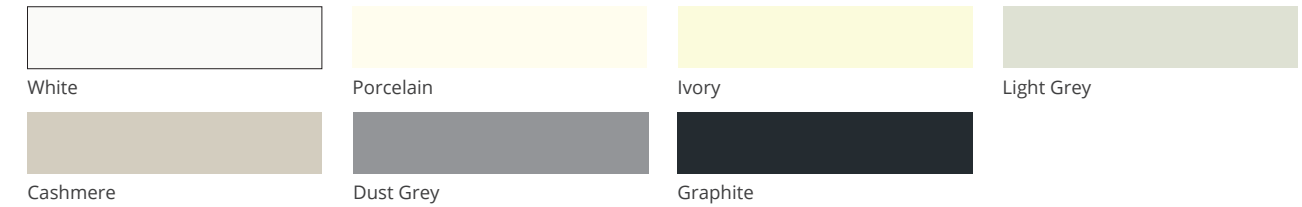
ZOLA GLOSS

Style: slab
Finish: polyurethane high gloss

MTO



Express Colours



See examples of Zola Gloss on pages 106, 120, 154.

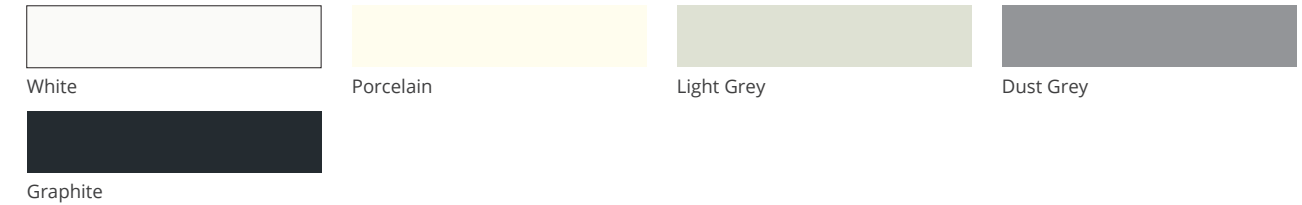
ZOLA MATTE

Style: slab
Finish: eco-friendly PVC

MTO



Express Colours



See examples of Zola Matte on pages 124, 156.

ZOLA MATTE PAINTED

Style: slab
Finish: matte painted

PTO CMS MTO



This door can be painted in any of our 27 standard paint colours or using our Colour Matching Service (see pages 202-204). Zola Matte Painted is available in a selection of made to order doors, drawerfronts and accessories (see page 204). See examples of Zola Matte Painted on pages 62, 74, 88, 146.

Handles

Choose from our extensive range of handles and knobs to complement traditional, contemporary or anything in between kitchen designs.

BRUSHED



K1-197
Brushed Satin Nickel



K1-200
Brushed Satin Nickel



K1-204
Silk Polished



K1-203
Brushed Brass



K1-197 & K1-200



K1-215 & K1-212



K1-209
Inox Look



K1-212
Inox Look



K1-215
Inox Look



K1-219
Inox Look



K1-201
Brushed Copper



K1-168
Brushed Nickel



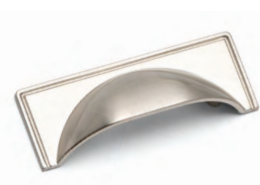
K1-148
Brushed Steel



K1-167
Matte Chrome



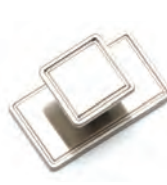
K1-146
Brushed Steel



K1-171
Brushed Nickel



K1-174
Brushed Nickel



K1-179
Brushed Nickel



K1-86
Brushed Chrome



K1-178
Brushed Nickel



K1-90 to K1-92
(various lengths available)
Brushed Nickel



K1-52 to K1-53
(various lengths available)
Brushed Nickel

POLISHED



K1-191
Polished Nickel



K1-193
Polished Nickel



K1-192
Polished Brass



K1-194
Polished Brass



K1-195
Polished Nickel



K1-198
Polished Nickel



K1-202
Mirror Polished Chrome



K1-205
Polished Brass



K1-207
Chrome



K1-169
Chrome



K1-213
Chrome



K1-217
Chrome



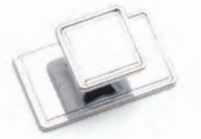
K1-177
Chrome



K1-172
Chrome



K1-175
Chrome



K1-180
Chrome



K1-241 to K1-247
(various lengths available)
Chrome



K1-227 to K1-233
(various lengths available)
Chrome



K1-166
Chrome



K1-141 to K1-142
(various lengths available)
Chrome



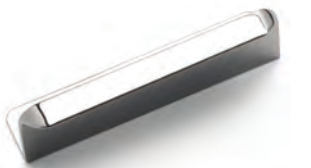
K1-185 to K1-187
(various lengths available)
Chrome



K1-165
Chrome



K1-181 to K1-183
(various lengths available)
Chrome



K1-188 to K1-190
(various lengths available)
Chrome



K1-145
Chrome



K1-153
Polished Nickel



K1-156
Polished Nickel



K1-159
Polished Nickel



K1-147
Chrome



K1-164
Chrome

POLISHED

RUSTIC



K1-196
American Copper



K1-199
American Copper



K1-152
American Copper



K1-155
American Copper



K1-158
American Copper



K1-214
Antique Brown



K1-218
Antique Brown



K1-208
Antique Brown



K1-221



K1-208 & K1-214

RUSTIC



K1-221
Brass



K1-223
Brass



K1-222
Copper



K1-224
Copper



K1-226
Brass



K1-225
Copper



K1-60
Antique Pewter



K1-61
Brass



K1-154
Pewter



K1-157
Pewter



K1-160
Pewter



K1-99
Pewter



K1-104
Pewter



K1-173
Pewter



K1-176
Pewter



K1-170
Pewter

MATTE BLACK



K1-206
Matte Black



K1-210
Matte Black



K1-220
Matte Black



K1-216
Matte Black



K1- 234 to K1-240
(various lengths available)
Matte Black Anodized



K1-248 to K1-258
(various lengths available)
Matte Black Anodized

TIMBER



K1-113
Oak



K1-206

KITCHEN DOOR CARE & MAINTENANCE

With the appropriate care and maintenance our kitchen doors and components are designed to provide many years of reliable service. To help keep your kitchen in the best possible condition please follow the simple guidelines below.

INSTALLATION ADVICE

Pre Installation

Ensure that all new-builds or newly plastered rooms have been left to environmentally stabilise prior to the installation of new kitchen doors. Kitchen doors must not be installed into a damp, or moisture-rich environment as it will cause undesirable movement in the joints and panels of the door. A hygrometer should be used to assess conditions.

To help to minimise any potential damage to the kitchen whilst you are installing it, please read and adhere to the following instructions and recommendations:

- We would advise that you make an initial check to confirm that you have the correct quantity and sizes of fascias; you can do this by referring to the labels attached to the outer packaging.
- The fascias should be stored flat and away from the working area. Take extreme care when stacking the fascias with hinges attached to ensure that the hinges do not mark other fascias. Do not lean the fascias against one another, or against any surface without proper protection in-between.
- Ensure that you fully inspect each individual fascia prior to attaching the hinges. Claims for damage to the fascia will not be accepted after the hinges have been attached.
- Take extreme care when unpacking the fascias and do not use sharp blades to cut away the packaging.
- When attaching the hinges, place the fascia face down on a soft clean surface, ensuring that there is no grit, sawdust or other matter underneath that can damage the surface of the fascia whilst the hinges are attached. It is good practice to place a sheet of clean cardboard between the fascia and the flat surface prior to attaching the hinges.
- If the hinges are 'knock-in' type. Use a rubber mallet to knock the hinges into the fascia without using excessive force.
- Once the hinges have been attached to a door, hang the door on the unit straight away to avoid damage. Do not stack the doors with the hinges touching other doors, as this can cause scratches or marks to the other fascias.
- Do not stack the doors on their ends on any hard surface; this can cause chipping and scratching along the edge of the fascia, especially on the handle edge of ranges with an integral handle. Prior to fitting, the fascias should be stored flat, ensuring that they are not resting on any dirt or debris that may damage or mark the finish.
- You should take extreme care not to put the door down with excessive force on any edge, especially the handle edge, as this will cause crushing/impact damage on these edges.

- Take extreme care not to put the door down on any hard or rough surface such as bare concrete floors, or on any debris such as sawdust, grit or screws, as this can damage the product.
- If the fascias are attached to the carcasses, then you should carefully remove the fascias by unclipping the hinges, and storing these flat in a clean safe environment away from your working area, utilising the packing materials from the units.
- Where cutting/scribing décor panels and trim, you must use a sharp quality saw blade of the appropriate grade for fine-cutting, or a suitable router. Small chips can appear along the cut-edge, and so extra care must be taken to minimise the risk of chipping. Using a blunt or inappropriate saw blade will produce a poor finish, and this will not be covered by the guarantee.
- *On Painted Products:* Any fine chips along the cut edge should be smoothed with a fine grade sand paper prior to fitting.
- All cut edges should be sealed against moisture ingress using a suitable water resistant sealant/adhesive prior to installation.
- All trims are supplied in long lengths and need to be cut down on site, and again it is important that this is done using the appropriate tools.
- When fitting the plinth, ensure that you check the dimensions of any adjacent appliances. On occasion, the plinth may need to be pulled forward to ensure that it clears the front of the appliance. This can be achieved by fitting blocks using off-cuts to the rear of the plinth prior to attaching the plinth clips, to step the plinth forward from its normal position.

General Care

As with all kitchen furniture the most common problems found occur as a result of excessive or prolonged exposure to heat and/or moisture. Always ensure that water is not left around sink areas as damage caused as a result is not covered by the guarantee.

Always wipe off excess moisture and be careful with extreme heat sources, such as kettles, ovens and toasters. It is recommended that these heat sources are not placed directly under wall units when they are in use; they generate a higher level of heat and moisture than is often appreciated and can quickly and easily lead to damage of the furniture.

Don't place appliances that create steam (e.g. steamer, coffee maker or kettle) underneath the cabinets so that the steam flows up against the underside of the cabinet and doors.

If using glass cleaner to clean your glass doors be careful not to damage the finish of the door and cabinet parts while cleaning. Do not spray glass cleaner directly on to the glass or cabinet parts as this may discolour the finish of your kitchen cabinets. Instead, spray a small amount of cleaner on to a lint free cloth or paper towel then wipe the glass.

Don't open the door of the dishwasher immediately after the programme has ended, as exposure to heat and the high humidity increases the risk that the door may absorb moisture and swell.

Please note that after a period of time it is quite normal for the colouring of kitchen units to mellow in colour. This is not a manufacturing fault and is as a result of exposure to light. This means that any additional parts subsequently ordered for your kitchen, or supplied as replacements may not be an exact colour match. However any additional parts supplied will also mellow over time to blend with your existing units.

The colour of doors and drawer fronts may appear mismatched in colour. This apparent mismatch is sometimes the effect of differing light conditions within your kitchen, (known as metamerism). To check your doors and fascia you should place them side by side in natural daylight for comparison.

Cleaning advice for all door types including timber, painted, foil, stainless steel & vinyl

- Do not use wax-furniture polish, abrasive or aggressive cleaners, bleach or other hypochlorite (chlorine) based cleaners, multipurpose cleaners, dilutes, acetone, alcohol, solvent or similar products on the door, as this will damage the surface; additionally wax and polishes leave a residue build up that is difficult to remove.
- Only use a 5% soap, 95% water (liquid soap) solution, wiping with a damp (not wet) cloth, finally drying with a soft clean cloth.
- Ensure all cooking splashes are wiped immediately with a damp cloth; and dust with a soft cloth only.
- Never use any abrasive pads or abrasive cleaners on the furniture. Spills and condensation on the fascias/panels should be cleaned and dried immediately.

Timber & Veneered Doors

Cleaning: when cleaning timber doors you must follow the pattern of the grain. It is advisable to use a damp (not wet) cloth to remove fingerprints and marks, followed at once with a clean and dry soft cloth.

Moisture: excess moisture can damage a timber product - it is recommended that susceptible areas such as around the sink are thoroughly maintained and kept dry at all times.

Light: timber changes colour when exposed to light. Light, lacquered surfaces also have a certain tendency to "yellow with age" depending on the exposure to light. The species of timber and intensity of exposure will affect the rate of change. Due to this we recommend that timber samples be changed regularly.

It is advised that colour change is taken into consideration when replacing or fitting new doors some time after the original kitchen has been installed.

PVC & High Gloss Finished Doors

PVC/Lacquer coated products are manufactured from the highest quality materials. Please be careful not to puncture the PVC/melamine lacquered surface of your panels. These should be kept dry in order to prevent moisture ingress.

Your gloss doors will come with a protective film over the front. You should remove this only after they are installed as the curing process continues for around 72 hours after the film is removed. This means the doors will be liable to scratching and other marks. You should avoid cleaning the doors for at least a few days to prevent any marks appearing on the surface.

You should clean the doors with a soft damp cloth and a mild detergent. Never use any harsh or abrasive cleaners as this may damage the gloss surface of the door. Normal cleaning and polishing may leave minor scratches on the surface of the door, which is quite natural.

Moisture: Periodically clean the interior and exterior surfaces of the door using a soft, damp cloth. Wipe dry all surfaces after cleaning.

Use only cleaning agents that are intended for the materials used in your kitchen. Avoid any agents that contain ammonia, alcohol, bleach or an abrasive.

If the surface of the product is exposed to any oil based substance (for example olive oil, butter, margarine or cooking oil), the spillage must be wiped away immediately to prevent staining. Grease marks caused by these oil-based products can easily be removed by use of a mild detergent, non-abrasive cleaner if used immediately after spillage has happened.

Abrasive cleaners are not recommended for this type of product. Do not expose the doors or panels to temperature in excess of 60°C (140°F) (Approximately the temperature of washing up water).

Light: If the doors are supplied with a protective film on the face they must not be directly exposed to sunlight. Once installation is complete, carefully remove the protective film from the front of the fascia. We also advise that colour change is taken into consideration when replacing or fitting new doors some time after the original kitchen has been installed.

Painted Doors

Cleaning: it is advisable to use a damp (not wet) cloth to remove fingerprints and marks, followed at once with a clean and dry soft cloth. Any form of furniture polish or other cleaning products should be avoided.

Light: painted finishes will change colour when exposed to light - the intensity of exposure will affect the rate of change. Due to this, we recommend that painted swatches and door samples be changed regularly.

We also advise that colour change is taken into consideration when replacing or fitting new doors some time after the original kitchen has been installed.

Stained Doors

Our range of stains are protected by an application of lacquer.

Cleaning: it is advisable to use a damp (not wet) cloth to remove fingerprints and marks, followed at once with a clean and dry soft cloth.

Light: stained finishes will change colour when exposed to light - the intensity of exposure will affect the rate of change. Due to this, we recommend that stain swatches and door samples be changed regularly.

We also advise that colour change is taken into consideration when replacing or fitting new doors some time after the original kitchen has been installed.

Sanded (raw) Doors

Cleaning: sanded products are unfinished and therefore the care of these doors will depend on the type of finish applied, eg paint, stain, wax etc., see above for care guidance.

Please note your guarantee may be adversely affected if used for non general domestic environments.

KITCHEN
STORI |
KITCHENSTORI.COM

