

Painted





There's something truly special about a painted finish... whether it be its distinctive touch, or it's crafted aesthetic, it somehow instantly makes you feel right at home.

But for us, what we really love about Paint is its ability to give you choice and flexibility. It allows you to make a room your own, choosing colours to match your personal style and flair. From light to dark, bright to pale, there's a shade to suit everyone's individuality.

ethos



Luzzi - Featured in Gloss Ivory
Gloss Painted Kitchens — See page 32

Contents

- 06 Painted Colours
- 08 Matt Painted Kitchens
- 30 Gloss Painted Kitchens
- 36 Timber Painted Kitchens
- 58 Matt Painted Bedrooms
- 80 Handle Accessories



Hyde - Featured in Stone Grey
Matt Painted Bedrooms — See page 76



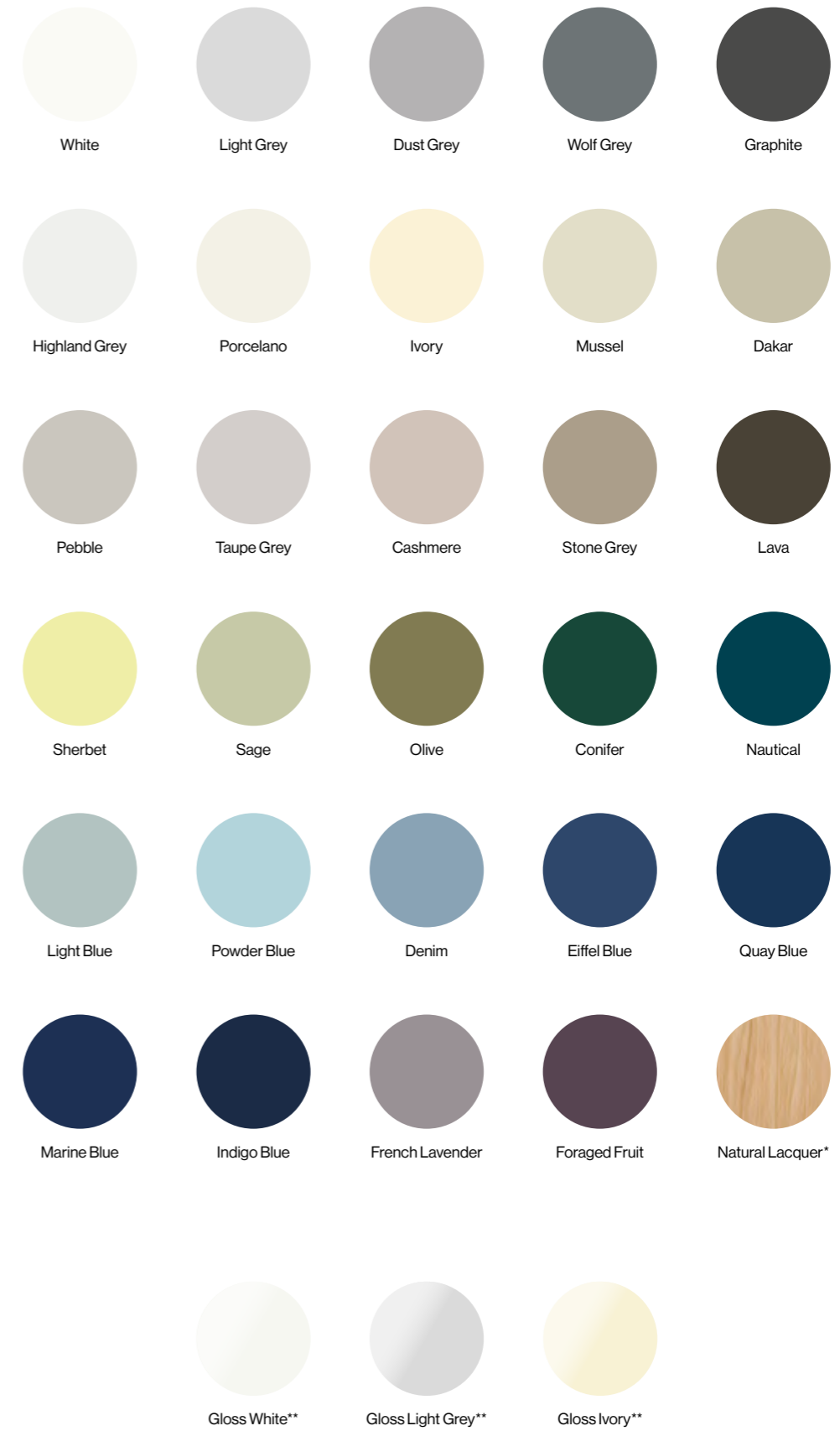
New
Range

Tenby - Featured in Conifer
Matt Painted Kitchens — See page 14

Paint Collection

Our Paint Collection has been carefully selected to provide you with the most sought after shades that will stand the test of time. With a wide range of 29 matt and 3 gloss colours to choose from, you're sure to find the perfect match for your kitchen and bedroom interiors.

Our paints are designed to withstand everything that life throws at it. We only use highest quality, highest performing, durable paints, to ensure you get real depth of colour that lasts.



*Natural Lacquer only available for Greenwich Oak door style (See page 46).

**Gloss colours are only available for Luzzi door style (See page 30).

Colours swatches shown are approximate. See Painted Swatch Book for true colour match.



Door Style: Hartford / White. Handles: Oxford Cup / Bronze / Code 124. Oxford Knob / Bronze / Code 122.

For a kitchen interior that never fails to impress, choose a timeless finish that suits every door design

MATT PAINTED KITCHENS



Arena
Smooth J-Pull



Tenby
Grained J-Pull



Hartford
Smooth Shaker



Belair
Smooth Slab



Hyde
Grained Slab

With five unique door styles available in both kitchen and bedroom ranges, you can create timeless, modern and traditional matt painted interiors. All these door styles have several coats of high quality matt paint applied giving them a bold and durable colour finish, that lasts.

KEY FEATURES

5 Door Styles available in 29 Matt Colours



Arena

Form with function built in, Arena is the stylish, yet practical choice for your kitchen design. With its integrated handle and smooth exterior surface, it's perfect for those who prefer a more contemporary style.

KEY FEATURES

Handle-less J-Pull style door with a smooth finish. Available in 29 Matt Colours





COLOUR TIP

Shades of warm grey and soft white contrast perfectly with natural wood textures and help break up the space to create a functional room for living and entertaining.

New
Range



Tenby combines handle-less design with the subtle look and feel of real wood. Its embossed wood grain texture provides a delicate blend between natural and constructed forms, making it a truly unique, minimalist door style.

KEY FEATURES

Handle-less J-Pull style door with embossed wood grain effect. Available in 29 Matt Colours.



COLOUR TIP

Bring the outside in, by combining rich botanical shades of Olive green with natural wood grain textures.



Hartford

Somewhere between classic and contemporary, the Hartford door shows discipline in design by taking a less-is-more approach. Clean lined and quietly elegant, this simple shaker style door is perfect for those who want the best of both worlds.

KEY FEATURES

Shaker style door with a smooth finish. Available in 29 Matt Colours.



COLOUR TIP

Combine Pebble and Nautical with accents of gold for a dramatically deep, elegant look.

Door Style: Hartford / Pebble and Nautical. Handles: Oxford Cup / Brushed Satin Brass / Code 123. Oxford Knob / Brushed Satin Brass / Code 121.



Belair

Belair represents simplicity in its truest form, with its clean lines and smooth, uninterrupted surface. Lending itself perfectly to both modern and minimal kitchen styles, Belair is pared back and understated by design.

KEY FEATURES

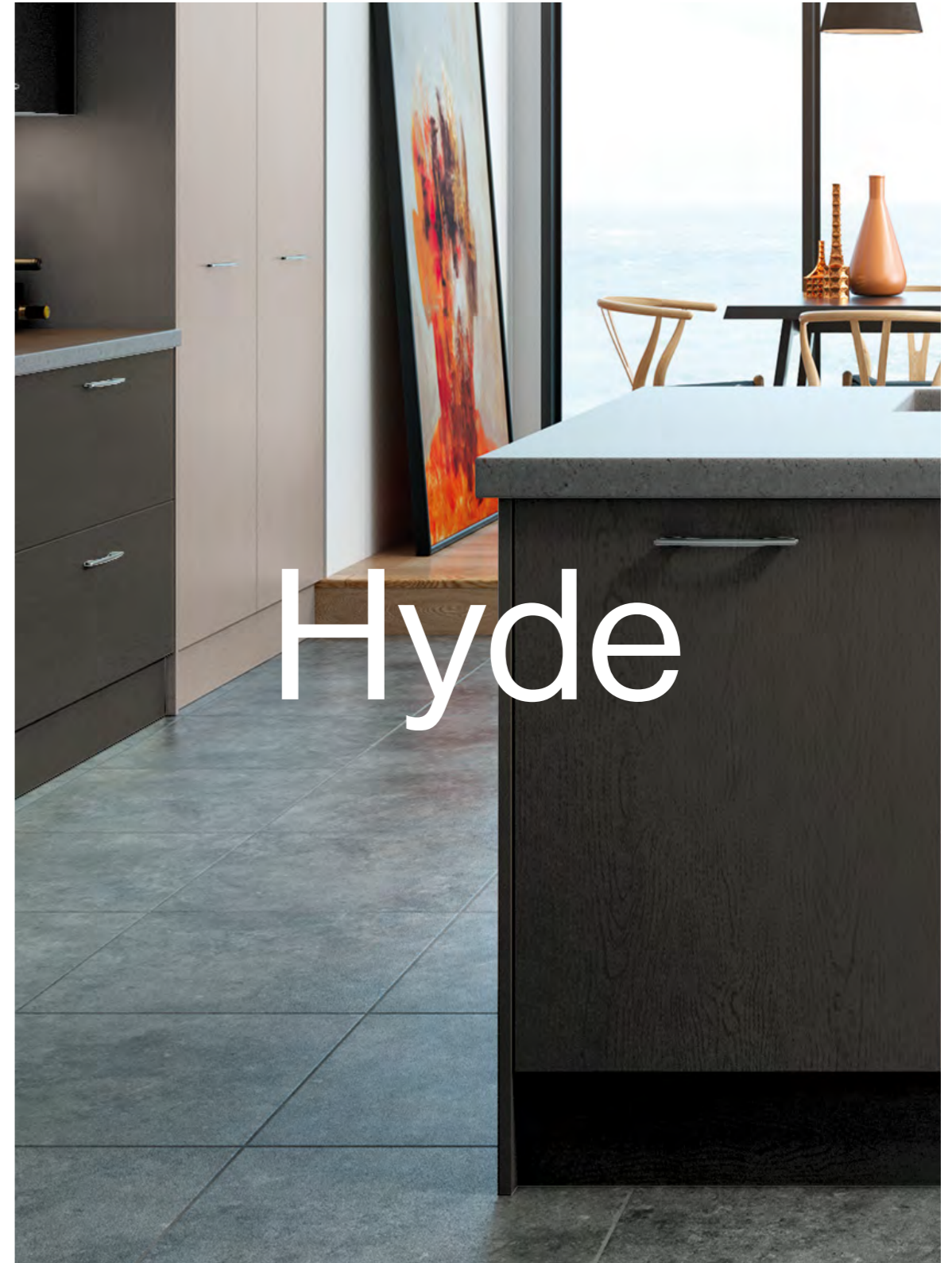
Smooth flat panel style door with square edges. Available in 29 Matt Colours.





COLOUR TIP

Create dramatic features with high contrasting colours. Then add highlights of metallic details to transform a monochrome space from plain to polished



Hyde

Minimalistic yet beautifully one-dimensional, Hyde's design is accentuated by its Matt Painted finish and embossed wood grain texture. Paired with the right colour palette Hyde creates stunningly simple, yet ultra-functional spaces.

KEY FEATURES

Flat panel style door with embossed wood grain effect. Available in 29 Matt Colours.



Door Style: Hyde / Dust Grey and Light Grey, Handles: D' Handle / Code 002.

COLOUR TIP

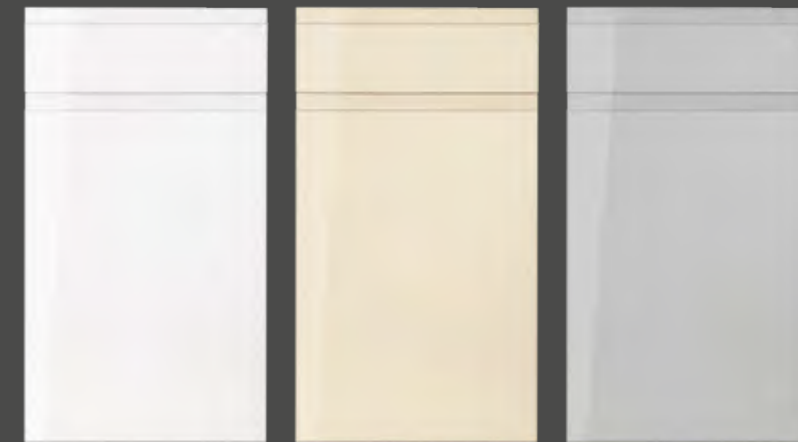
The combination of textured surfaces with a rustic, muted colour palette makes a room feel naturally light and spacious.



Door Style: Luzzi / Gloss White

High gloss, high impact.
Choose a bold, sleek, modern
finish to give your kitchen
design the wow effect

GLOSS PAINTED KITCHENS



Luzzi / Gloss White

Luzzi / Gloss Ivory

Luzzi / Gloss Light Grey

We've fine tuned our gloss painted range to provide you with the sleekest, most contemporary kitchen design. With our true handle-less, J pull style door you can create crisp, clean lines for the ultimate streamlined look. Choose from 3 bright, highly polished gloss colours that will help maximise your space by reflecting light across the kitchen surface.

KEY FEATURES

1 Handle-less Door Style available in 3 Gloss Colours



Luzzi

The one of a kind Luzzi is ideal for creating an abundance of light and space. It's sleek, sophisticated finish makes a bold statement and exudes elegance. It's the perfect choice for those looking to create a luxurious environment for entertaining.

KEY FEATURES

Handle-less J-Pull style door with a smooth gloss finish. Available in 3 Gloss Colours.





COLOUR TIP

Shiny surfaces combined with neutral, monochrome colours create a modern and sophisticated look.



Door Style: Edison / Wolf Grey. Handles: Windsor Base Knob / Code 081.

Attention to detail,
combined with quality timber
and a coat of fresh paint,
equals design excellence.

TIMBER PAINTED KITCHENS



Albany



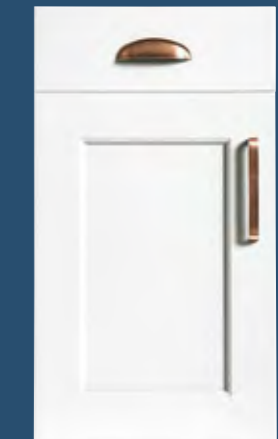
Hampton



Greenwich



Monroe



Edison

Take the traditional approach with five beautifully crafted, timeless designs, each made from solid timber. Ranging between both contemporary shaker and classic styles, each door provides a blank canvas for you to add a splash of colour and make your ideal kitchen interior a reality.

KEY FEATURES

5 Solid Timber Door Styles available in 29 Matt Colours



Albany

Perfectly refined in every way, Albany pays homage to traditional shaker principles. Pared back and disciplined by design, it's beauty lies in it's simplicity. With chunky, wide styles and rails it boasts a sturdy, homely aesthetic.

KEY FEATURES

Simple shaker style door made from solid timber. Available in 29 Matt Colours.



COLOUR TIP

Combine Graphite with bright whites and dark wood textures to create a opulent look and feel.

Door Style: Albany / Graphite. Handles: Flat 'D' / Code 066.



Hampton

Hampton is by far the most traditional kitchen within our Painted Collection. Its finely detailed, moulded centre panel creates a beautiful, country style aesthetic, that lends itself perfectly to any family home interior.

KEY FEATURES

Classic style door made from solid timber. Available in 29 Matt Colours.





COLOUR TIP

Give a classic style kitchen a modern splash of bold colour to create a truly unique look and feel.



Greenwich

For those who prefer a more natural, exposed wood finish, look no further than Greenwich. It's the only kitchen in our Painted collection that allows you to have oak cabinetry. Mix and match your preferred paint colour with either a beautiful lacquered or sanded Oak finish.

KEY FEATURES

Classic style, solid timber door. Available in 29 Matt Colours as well as Natural Lacquer or Sanded Oak.



COLOUR TIP

Find the most interesting feature in your kitchen and make it stand out with a bold, daring colour.

Door Style: Greenwich / Cashmere and Foraged Fruit. Handles: Essen 'D' Pewter / Code 116.



Monroe

One of the latest additions to our Painted Collection, Monroe is ideal for those who prefer a contemporary style, but want the authenticity and quality of a solid timber door. With its narrow stiles and rails and minimal detailing Monroe is both refined and confident.

KEY FEATURES

Brand New Range. Contemporary style door made from solid timber. Available in 29 Matt Colours.



New Range

COLOUR TIP

Brave bright, bold colours to create maximum wow effect. Balance them out with a contrasting, natural tone.



COLOUR TIP

Conifer Green is the trendy new alternative to black. Create a sophisticated style by pairing it with a marble worktop.

New
Range



Edison

Edison provides the perfect balance between classic and contemporary, with its minimal frame structure and its subtly curved moulding detail. Sophisticated yet demure, Edison is set to be a modern classic.

KEY FEATURES

Brand New Range. Classic style door made from solid timber. Available in 29 Matt Colours.



COLOUR TIP

Layer up tones of colour to add depth throughout your space. Accents of contrasting colours can highlight interesting features, such as open shelving within a dresser unit.

Door Style: Edison / Nautical, White and Light Blue. Handles: Camden Cup Antique Copper / Code 096. / Camden 'D' 168mm Antique Copper / Code 104.



Door Style: Belair / White. Handles: Soho Strap 160mm Pewter / Code 113.

Whatever your style,
you can sleep soundly in
the Bedroom space you've
always dreamed of.

MATT PAINTED BEDROOMS



Arena
Smooth J-Pull

Tenby
Grained J-Pull

Hartford
Smooth Shaker

Belair
Smooth Slab

Hyde
Grained Slab



Arena

Create a modern, streamlined bedroom interior with Arenas, smooth, handle-less design. Sleek and beautifully refined, it is the practical choice for those who prefer less fuss and like everything in its place.

KEY FEATURES

Handle-less J-Pull style door with a smooth finish. Available in 29 Matt Colours.





COLOUR TIP

Deep, cool blues create the perception of depth. Combine them with mossy greens and natural tones to add warmth and create cosy, inviting space

New
Range



Tenby

Create bedroom serenity, with Tenby's combination of embossed wood grain texture and streamlined, clutter-free, handle-less design.

KEY FEATURES

Handle-less J-Pull style door with embossed wood grain effect. Available in 29 Matt Colours.



COLOUR TIP

Deep, romantic blues such as Nautical help promote a sense of calm and relaxation.



Hartford is the door for those who prefer a more classic style interior. It's perfectly timeless, with its shaker inspired design yet retains a sense of simplicity with its minimal detailing. With the option to add custom paneling you have full control over your finished look.

KEY FEATURES

Shaker style door with a smooth finish. Available in 29 Matt Colours.



COLOUR TIP

Offset the colour of your cabinets with a bold contrasting wall colour to create an intimate bedroom interior.

Door Style: Hartford / Pebble. Handles: Camden 'D' 168mm Pewter / Code 107. Camden Cup Pewter / Code 099.



Belair

When it comes to creating a contemporary yet glamorous bedroom interior, Belair is the perfect choice. Its smooth, minimal design provides a blank canvas for you to add colour and dress your space with styles of your choice.

KEY FEATURES

Smooth flat panel style door with square edges. Available in 29 Matt Colours.



Opposite Page: Belair / Dakar. Handles: Camden 'D' 168mm Brushed Nickel / Code 105.
This Page: Belair / Sage. Handles: Soho Strap 160mm Pewter / Code 113.



COLOUR TIP

Combining deep shades with light creamy tones creates a rich, sophisticated look perfect for any master bedroom.



Hyde

Organised cabinet solutions make for a calming bedroom experience. If your short on space but high on storage, then Hyde has everything you need. You can unwind in style with it's minimal flat panel design and wood grain textured aesthetic.

KEY FEATURES

Flat panel style door with embossed wood grain effect. Available in 29 Matt Colours.



COLOUR TIP

Transform your space into a personal style sanctuary with strikingly rich and glamorous shades.

Door Style: Hyde / Foraged Fruit. Handles: Aries Steel Bar 502mm / Code 003.



D' Handle
Brushed Nickel
144mm
Code 002



Aries Steel Bar
Brushed Nickel
214mm / 502mm
Code 003



Angled Boss Bar
Brushed Nickel
195mm
Code 011



Tapered Bow
Satin Chrome
183mm
Code 013



Tubular Boss Bar
Brushed Nickel
204mm
Code 064



Keyhole Bar
Brushed Nickel
152mm / 480mm
Code 065



Flat D' Handle
Brushed Nickel
166mm
Code 066



Cromwell Flat D'
Pewter
160mm
Code 068



Strap
Satin Chrome
192mm
Code 017



Roundel
Satin Chrome
165mm
Code 019



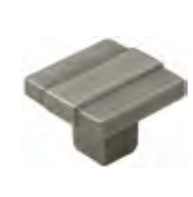
Half-Round Foot D' Handle
Pewter
133mm
Code 031



Half-Round Foot D' Handle
Bronze
133mm
Code 032



Cromwell Reeded D'
Pewter
178mm
Code 069



Cromwell Knob
Pewter
36mm
Code 070



Beehive Knob
Brushed Nickel
35mm
Code 073



Beam
Chrome
196mm / 496mm
Code 076



Hammered D' Handle
Bronze
158mm
Code 037



Hammered D' Handle
Pewter
158mm
Code 038



Shaker D' Handle
Satin Chrome
126mm
Code 039



Dimple D' Handle
Black
154mm
Code 040



Windsor Modern Cup
Chrome
145mm
Code 080



Windsor Base Knob
Chrome
38mm
Code 081



Clear Crystal Knob
Chrome Base
34mm
Code 082



Ornate Bar
Pewter
190mm
Code 083



Dimple D' Handle
Satin Chrome
154mm
Code 041



Dimple D' Handle
Chrome
154mm
Code 042



Hammered Knob
Bronze
35mm
Code 044



Hammered Knob
Pewter
35mm
Code 045



Collar Bar
Brushed Nickel
200mm
Code 084



Flat Curve
Chrome
190mm / 340mm
Code 087



Windsor D' Handle
Chrome
138mm
Code 095



Camden Cup
Antique Copper
125mm
Code 096



Dimple Knob
Satin Chrome
33mm
Code 048



Dimple Knob
Chrome
33mm
Code 049



Tapered Bow
Black
136mm
Code 050



Beech Knob
55mm
Code 057



Camden Cup
Brushed Nickel
125mm
Code 097



Camden Cup
Chrome
125mm
Code 098



Camden Cup
Pewter
125mm
Code 099



Camden D' Handle
Antique Copper
328mm
Code 100



Camden D' Handle
Brushed Nickel
328mm
Code 101



Camden D' Handle
Chrome
328mm
Code 102



Camden D' Handle
Pewter
328mm
Code 103



Camden D' Handle
Antique Copper
168mm
Code 104



Camden D' Handle
Brushed Nickel
168mm
Code 105



Camden D' Handle
Chrome
168mm
Code 106



Camden D' Handle
Pewter
168mm
Code 107



Soho Strap
Brushed Nickel
320mm
Code 108



Soho Strap
Chrome
320mm
Code 109



Soho Strap
Pewter
320mm
Code 110



Soho Strap
Brushed Nickel
160mm
Code 111



Soho Strap
Chrome
160mm
Code 112



Soho Strap
Pewter
160mm
Code 113



Bonn D' Handle
Black
173mm
Code 114



Essen D' Handle
Chrome
188mm
Code 115



Essen D' Handle
Dark Pewter
188mm
Code 116



Slim Square
Chrome
220mm
Code 117



Levi D' Handle
Chrome
170mm
Code 118



Finsbury D' Handle
Pewter
144mm
Code 119



Finsbury Cup
Pewter
100mm
Code 120



Oxford Knob
Brushed Satin Brass
32mm
Code 121
New



Oxford Knob
Bronze
32mm
Code 122
New



Oxford Cup
Brushed Satin Brass
122mm
Code 123
New



Oxford Cup
Bronze
122mm
Code 124
New



Oxford Knob
Brushed Nickel
32mm
Code 125
New



Oxford Knob
Chrome
32mm
Code 126
New



Oxford Cup
Brushed Nickel
122mm
Code 127
New



Oxford Cup
Chrome
122mm
Code 128
New



V-M01-Y2021